



Gulf Research Center
K n o w l e d g e f o r A l l

The Gulf Research Center Financials

Dubai (2000-2010) – Jeddah – Geneva – Cambridge

**For the Period of 22 years
2000 to 2021**

Financials

The GRC financials have been compiled for the period 2000-2021. The consolidated financial statement is a compilation of financial data from the following GRC entities:

- Gulf Research Center Foundation, Geneva
- Gulf Research Centre Cambridge, UK
- Gulf Research Center, Jeddah
- Gulf Research Center, Dubai (2000-2010)

This consolidated statement presents a summarized view of information abstracted from the unaudited annual financials of the individual GRC entities.

The primary source of GRC funding is Dr. Abdulaziz Sager, GRC Founder and Chairman.

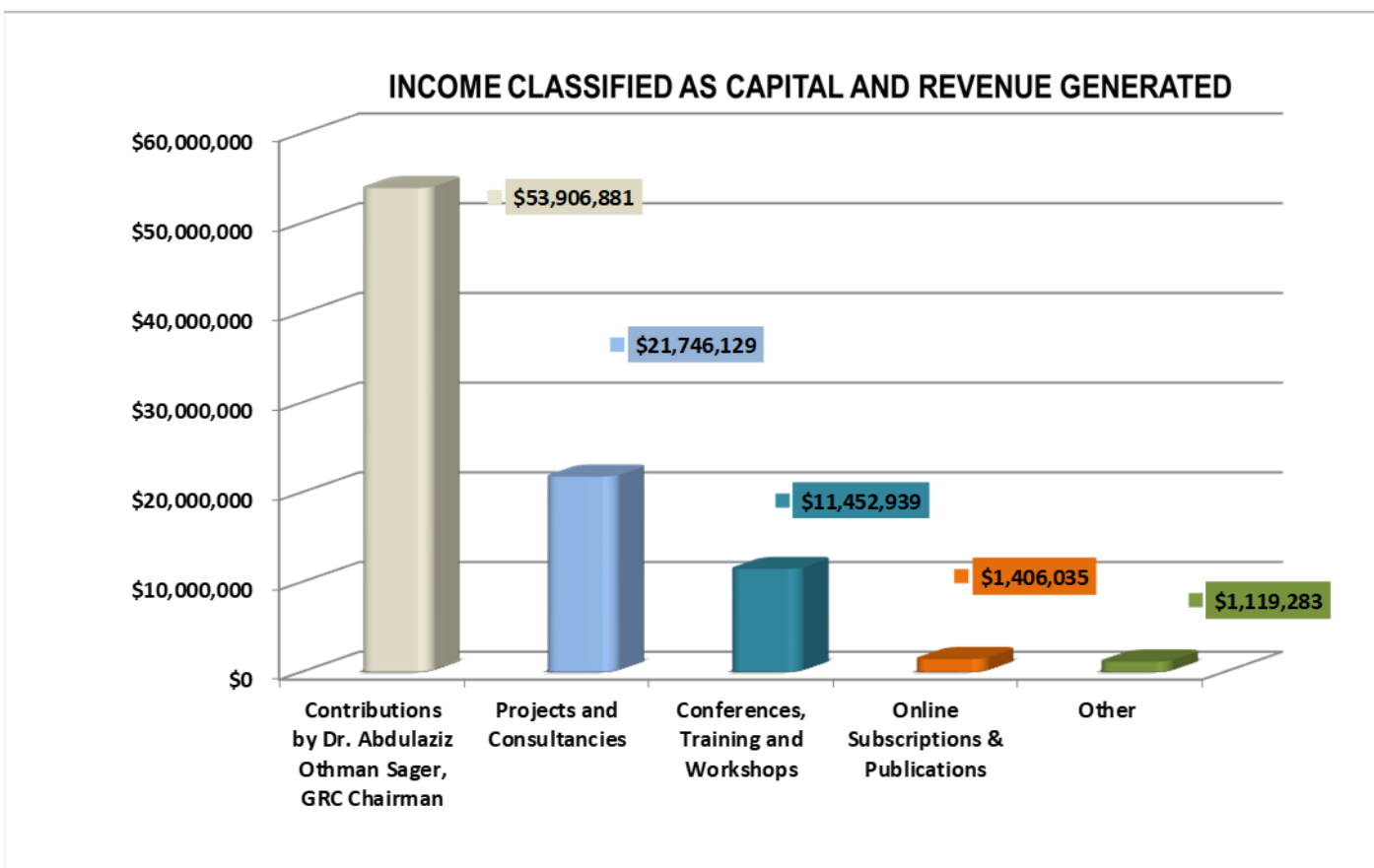
Consolidated Financial Statement of Gulf Research Center

Consolidated GRC Financial Statements -- (Unaudited)

Consolidated Statement of Activities for the Period

01 July 2000 to 31 Dec 2021

Description	Total
	All amounts in USD
Revenues	
Contributions by Dr. Abdulaziz Othman Sager, GRC Chairman	\$53,906,881
Projects and Consultancies	\$21,746,129
Conferences, Training and Workshops	\$11,452,939
Online Subscriptions & Publications	\$1,406,035
Other	\$1,119,283
Total Revenue	\$89,631,267

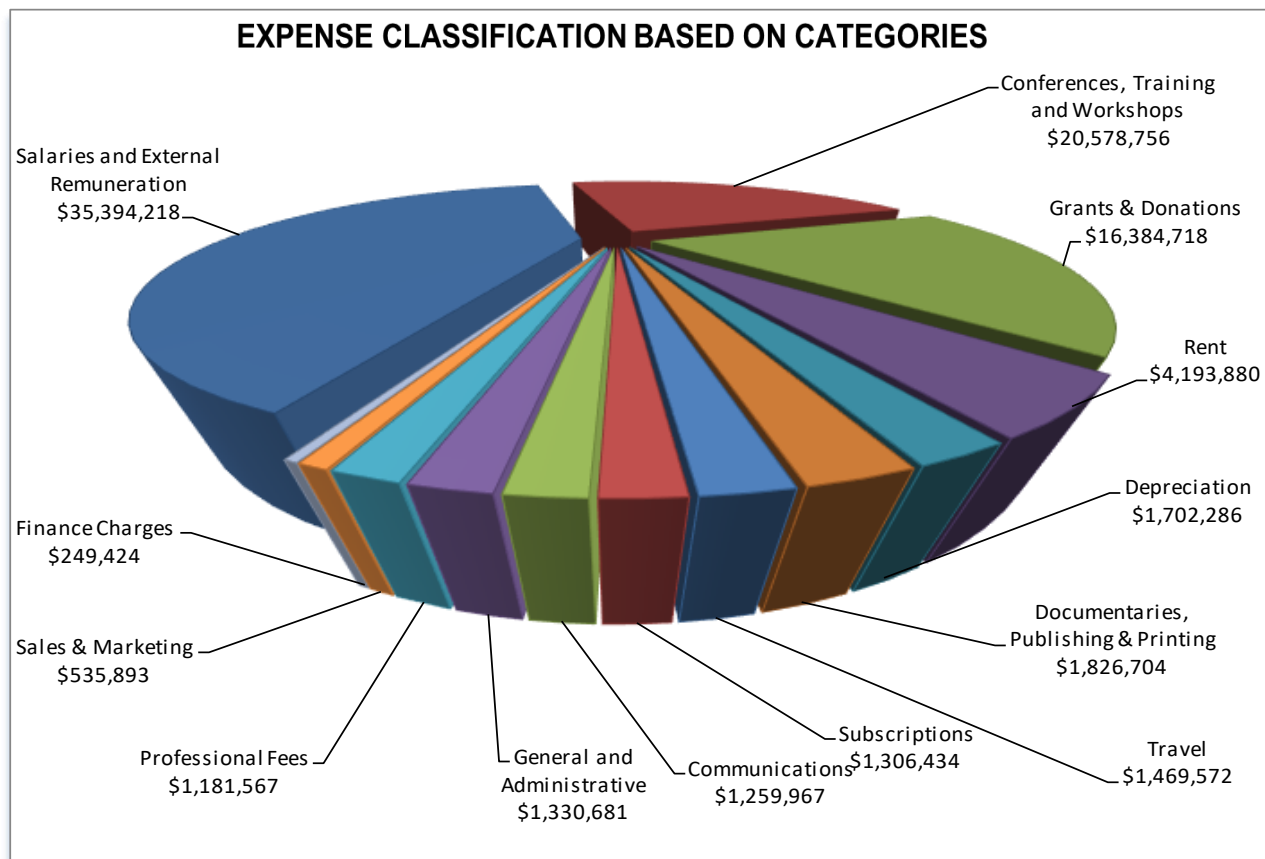


Consolidated GRC Financial Statements -- (Unaudited)

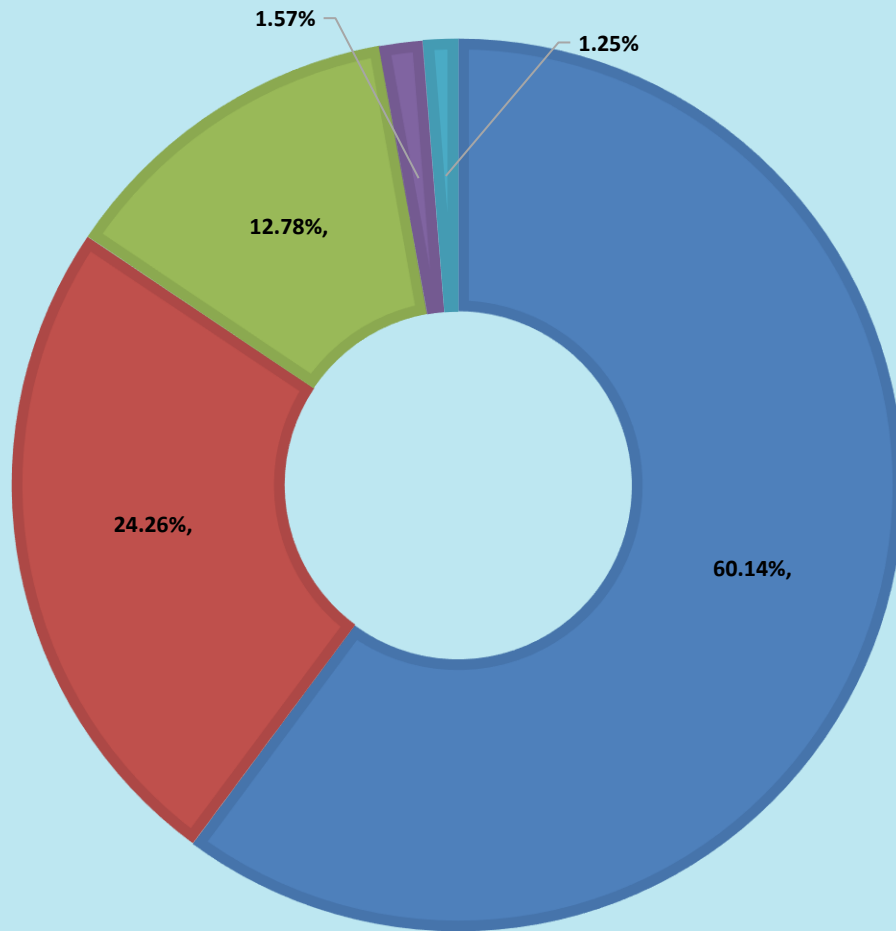
Consolidated Statement of Activities for the Period

01 July 2000 to 31 Dec 2021

Operating Expenses	
Salaries and External Remuneration	\$35,394,218
Conferences, Training and Workshops	\$20,578,756
Grants & Donations	\$16,384,718
Rent	\$4,193,880
Depreciation	\$1,702,286
Documentaries, Publishing & Printing	\$1,826,704
Travel	\$1,469,572
Subscriptions	\$1,306,434
Communications	\$1,259,967
General and Administrative	\$1,330,681
Professional Fees	\$1,181,567
Sales & Marketing	\$535,893
Finance Charges	\$249,424
Total Operating Expenses	\$87,414,101



SOURCES OF INCOME IN PERCENTAGE



■ Contributions by Dr. Abdulaziz Othman Sager, GRC Chairman

■ Projects and Consultancies

■ Conferences, Training and Workshops

■ Online Subscriptions & Publications

■ Other

Consolidated GRC Financial Statements

Consolidated Statements of Financial Position

01 July 2000 to 31 Dec 2021

Particulars	Total
	All amounts in USD
Assets:	
Long-term assets	
Property and equipment net	\$13,742
Total long-term assets	\$13,742
Current assets	
Trade and other receivables	\$309,444
Prepayments / advances	\$11,220
Cash in hand and at bank	\$1,737,178
Total current assets	\$2,057,842
Total assets	\$2,071,584
Liabilities:	
Current liabilities	
Trade and other payables	\$24,301
Accrued expenses	\$60,817
Total current liabilities	\$85,118
Net Equities/Reserves and Surplus	\$1,986,466
Total Liabilities & Equities	\$2,071,584
Net Assets	\$1,986,466

NOTE:

This is an unaudited consolidated financial statement for the following GRC entities:

Gulf Research Center Foundation ----- Gulf Research Centre Cambridge

Gulf Research Center – Jeddah ----- Gulf Research Center – Dubai

This statement is a compilation of the financial activities of the individual GRC entities.

The primary source of GRC funding is Dr. Abdulaziz Sager, GRC Founder and Chairman

Consolidated Financial Statement of Gulf Research Center (Entity-based)

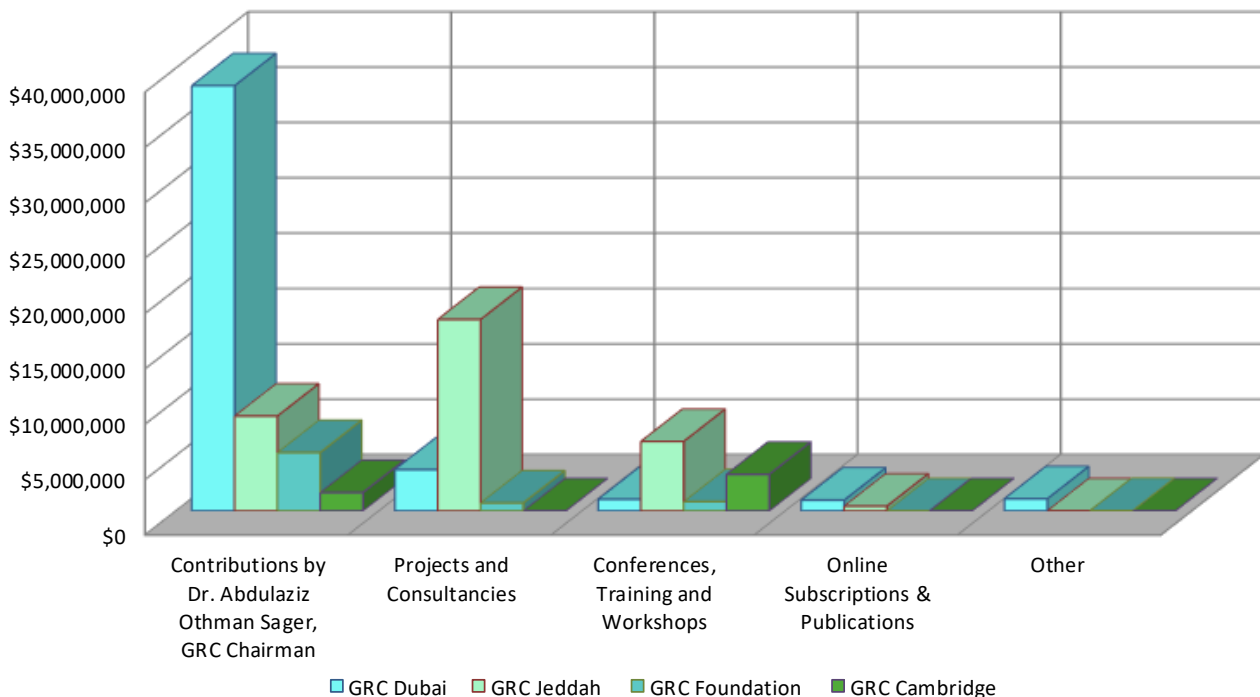
GRC Dubai (2000-2010) – GRC Jeddah
GRC Cambridge – GRCF Geneva

Consolidated GRC Financial Statements

Consolidated Statement of Activities for the period
01 Jan 2000 to 31 Dec 2021

Revenues	GRC Dubai	GRC Jeddah	GRC Foundation	GRC Cambridge	Total
Contributions by Dr. Abdulaziz Othman Sager, GRC Chairman	\$38,409,705	\$8,566,848	\$5,270,809	\$1,659,519	\$53,906,881
Projects and Consultancies	\$3,731,876	\$17,291,679	\$722,574	-	\$21,746,129
Conferences, Training and Workshops	\$1,046,116	\$6,274,729	\$831,268	\$3,300,826	\$11,452,939
Online Subscriptions & Publications	\$971,040	\$434,995	-	-	\$1,406,035
Other	\$1,094,835	\$7,319	\$15,670	\$1,460	\$1,119,283
Total Revenue	\$45,253,573	\$32,575,570	\$6,840,320	\$4,961,805	\$89,631,267

Income Contribution to all GRC Units



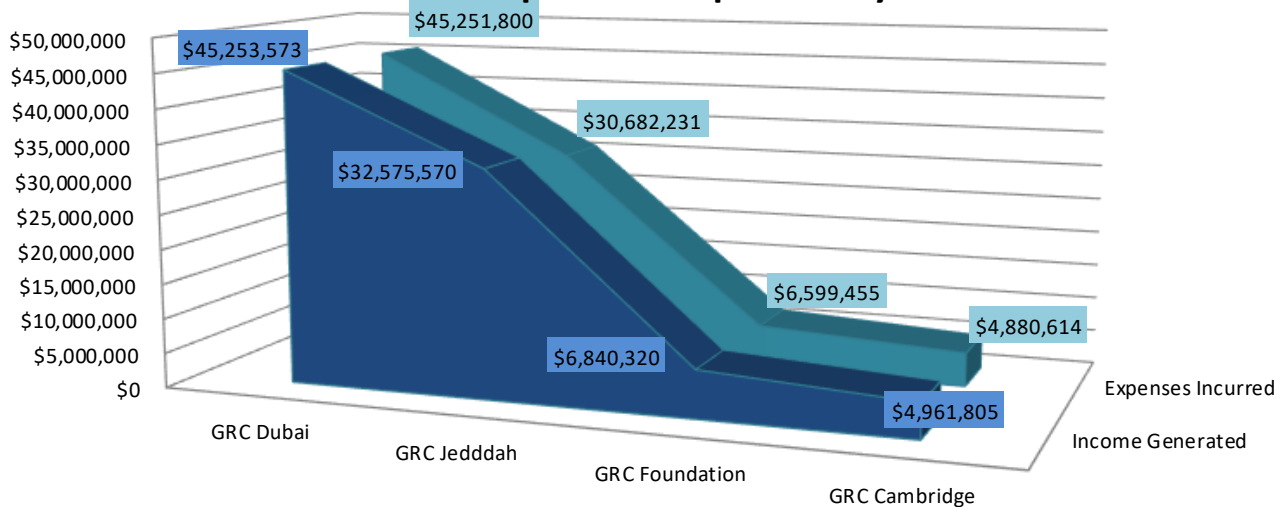
Consolidated GRC Financial Statements

Consolidated Statement of Activities for

Period - 01 Jan 2000 to 31 Dec 2021

Description	GRC Dubai	GRC Jeddah	GRC Foundation	GRC Cambridge	Total
Operating Expenses					
Salaries and External Remuneration	\$24,977,726	\$6,139,971	\$3,854,832	\$421,689	\$35,394,218
Conferences, Training and Workshops	\$5,804,004	\$10,043,070	\$426,517	\$4,305,166	\$20,578,756
Grants & Donations	\$2,899,944	\$13,214,188	\$270,587	-	\$16,384,718
Rent	\$3,195,851	\$112,000	\$886,029	-	\$4,193,880
Depreciation	\$1,606,628	\$14,577	\$81,081	-	\$1,702,286
Documentaries, Publishing & Printing	\$1,477,004	\$349,700	-	-	\$1,826,704
Travel	\$949,632	-	\$519,941	-	\$1,469,572
Subscriptions	\$1,306,434	-	-	-	\$1,306,434
Communications	\$1,062,173	\$23,709	\$174,085	-	\$1,259,967
General and Administrative	\$652,415	\$495,877	\$161,734	\$20,655	\$1,330,681
Professional Fees	\$615,141	\$289,140	\$153,820	\$123,466	\$1,181,567
Sales & Marketing	\$526,255	-	-	\$9,638	\$535,893
Finance Charges	\$178,593	-	\$70,830	-	\$249,424
Total Operating Expenses	\$45,251,800	\$30,682,231	\$6,599,455	\$4,880,614	\$87,414,101

Income and Expense Comparison by GRC Unit

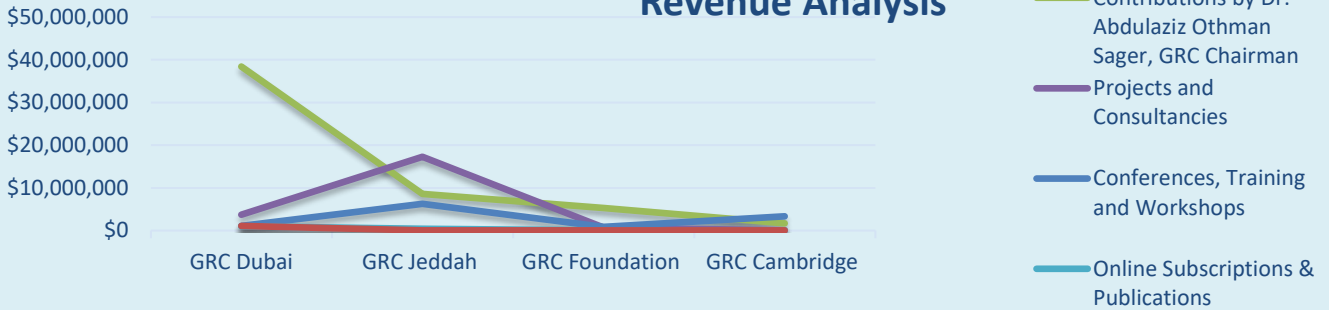


	GRC Dubai	GRC Jeddah	GRC Foundation	GRC Cambridge
Income Generated	\$45,253,573	\$32,575,570	\$6,840,320	\$4,961,805
Expenses Incurred	\$45,251,800	\$30,682,231	\$6,599,455	\$4,880,614

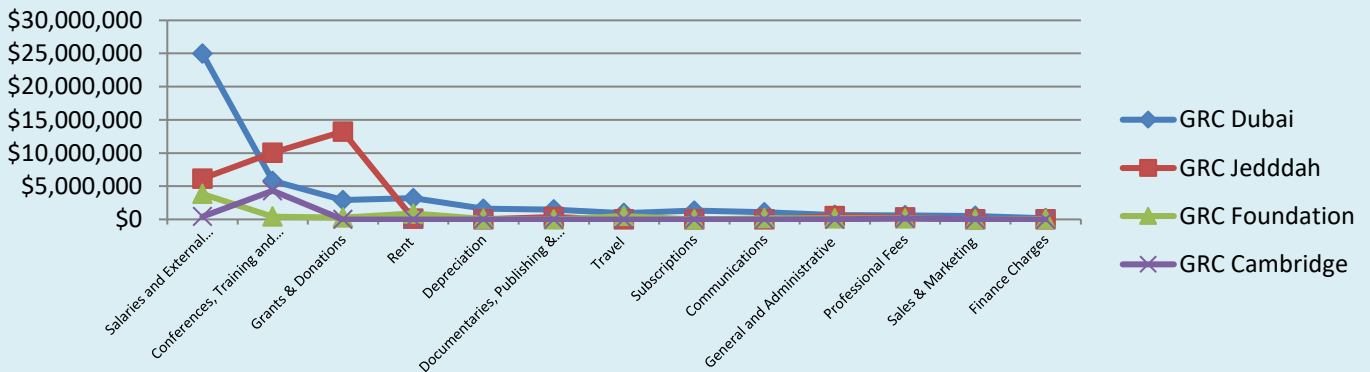
Revenue and Expense Analysis for all GRC Units (2000 – 2021)

Summary of total revenues and expenses for all GRC units in Dubai, UAE (GRC), Jeddah, Saudi Arabia (GRC), Geneva, Switzerland (GRC Foundation), and Cambridge, UK (GRC Cambridge) during the period 2000 to 2021:

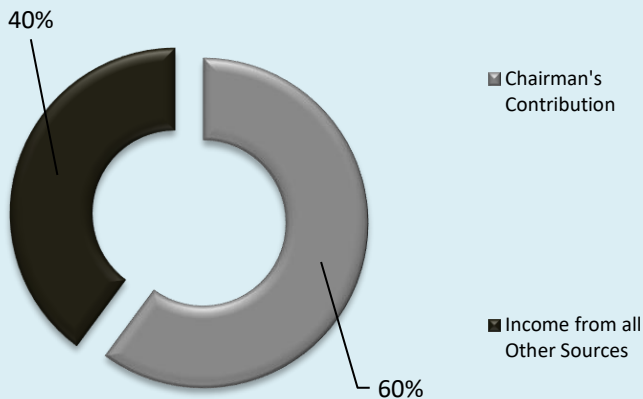
Revenue Analysis



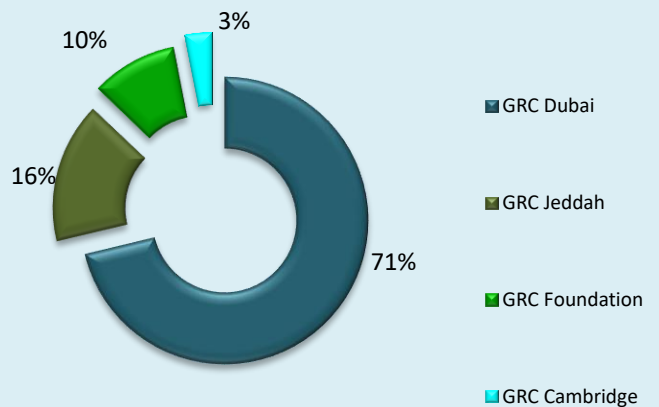
Expenses Comparison



Income Analysis (Chairman's Contribution and Income from Other Sources)



Chairman's Contribution to all GRC Offices





Gulf Research Center
K n o w l e d g e f o r A l l