



Gulf Research Center
Knowledge for All

The Gulf Research Center Financials

Dubai (2000-2010) – Jeddah – Geneva – Cambridge

**For the Period of 23 years
2000 to 2022**

Financials

The GRC financials have been compiled for the period 2000-2022. The consolidated financial statement is a compilation of financial data from the following GRC entities:

- Gulf Research Center Foundation, Geneva
- Gulf Research Centre Cambridge, UK
- Gulf Research Center, Jeddah
- Gulf Research Center, Dubai (2000-2010)

This consolidated statement presents a summarized view of information abstracted from the unaudited annual financials of the individual GRC entities.

The primary source of GRC funding is Dr. Abdulaziz Sager, GRC Founder and Chairman.

Consolidated Financial Statement of Gulf Research Center

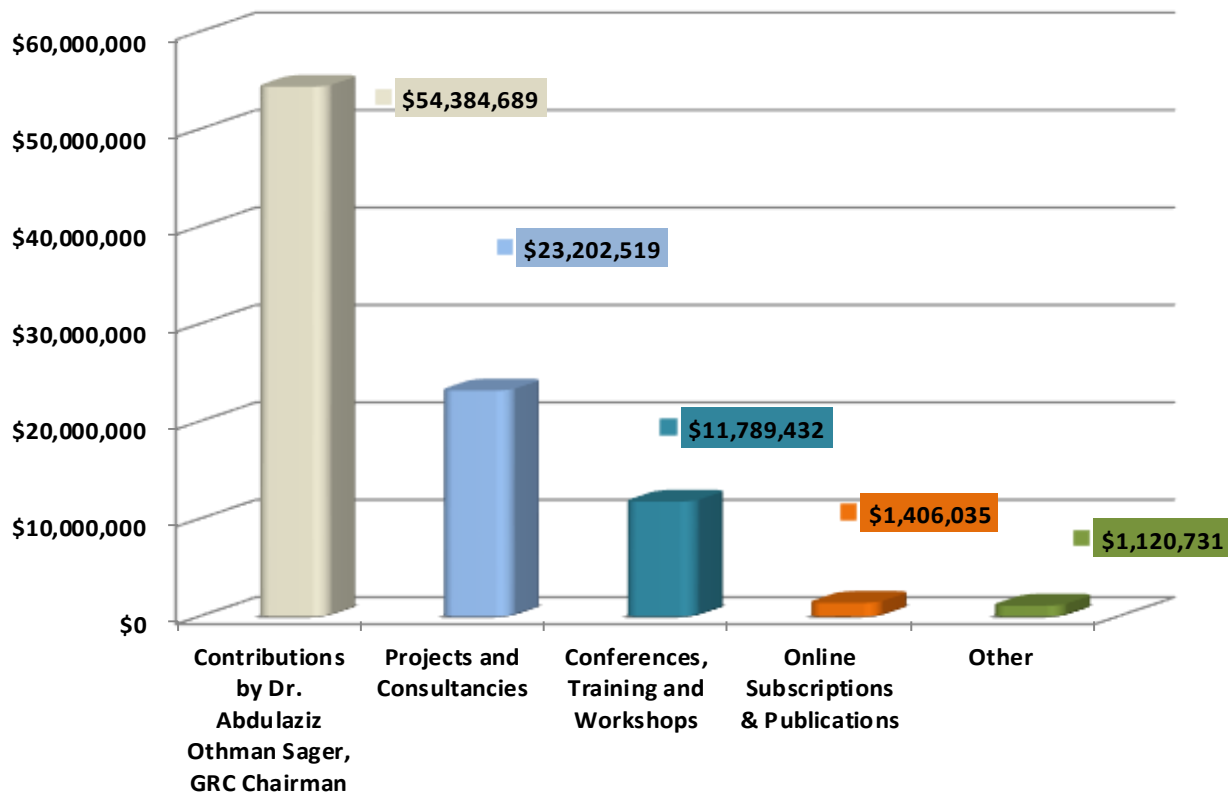
Consolidated GRC Financial Statements -- (Unaudited)

Consolidated Statement of Activities for the Period

01 July 2000 to 31 Dec 2022

Description	Total
	All amounts in USD
Revenues	
Contributions by Dr. Abdulaziz Othman Sager, GRC Chairman	\$54,384,689
Projects and Consultancies	\$23,202,519
Conferences, Training and Workshops	\$11,789,432
Online Subscriptions & Publications	\$1,406,035
Other	\$1,120,731
Total Revenue	\$91,903,406

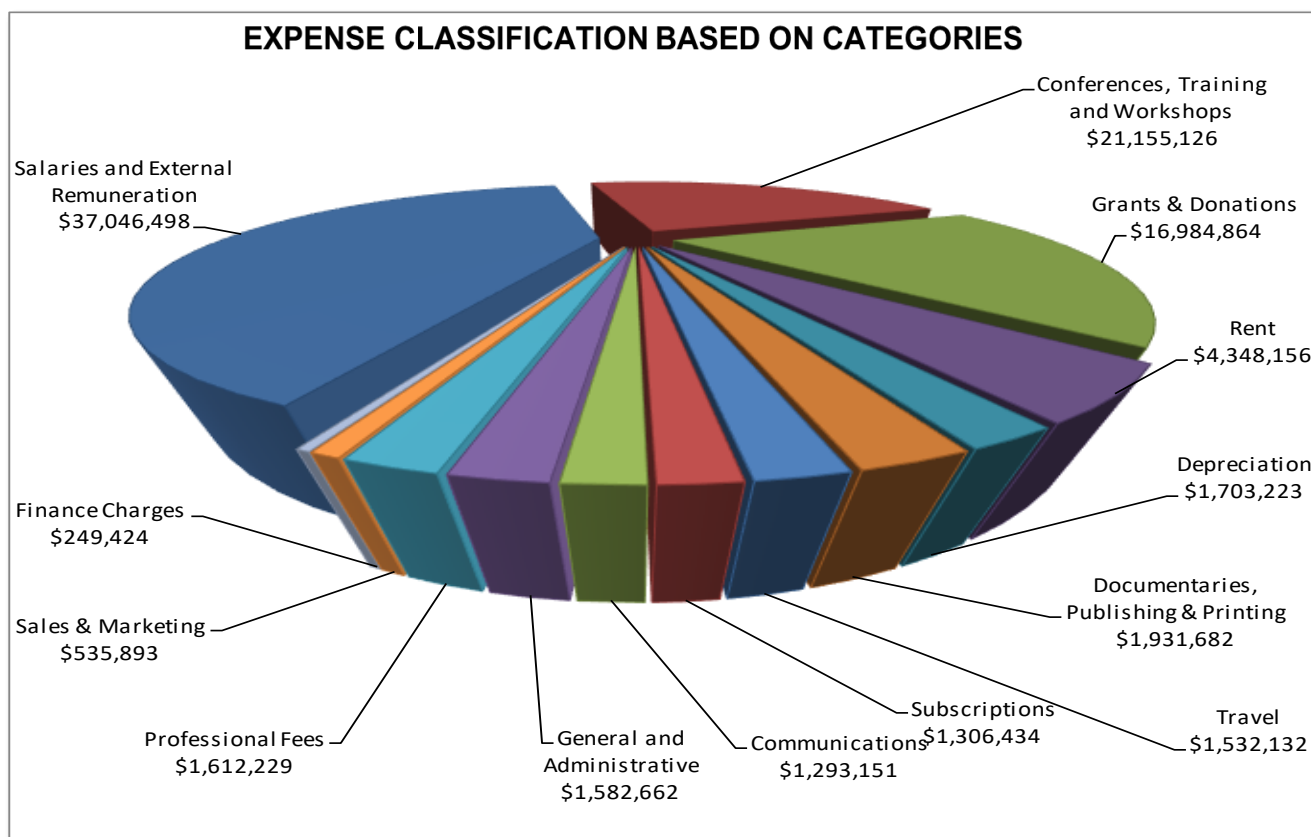
INCOME CLASSIFIED AS CAPITAL AND REVENUE GENERATED



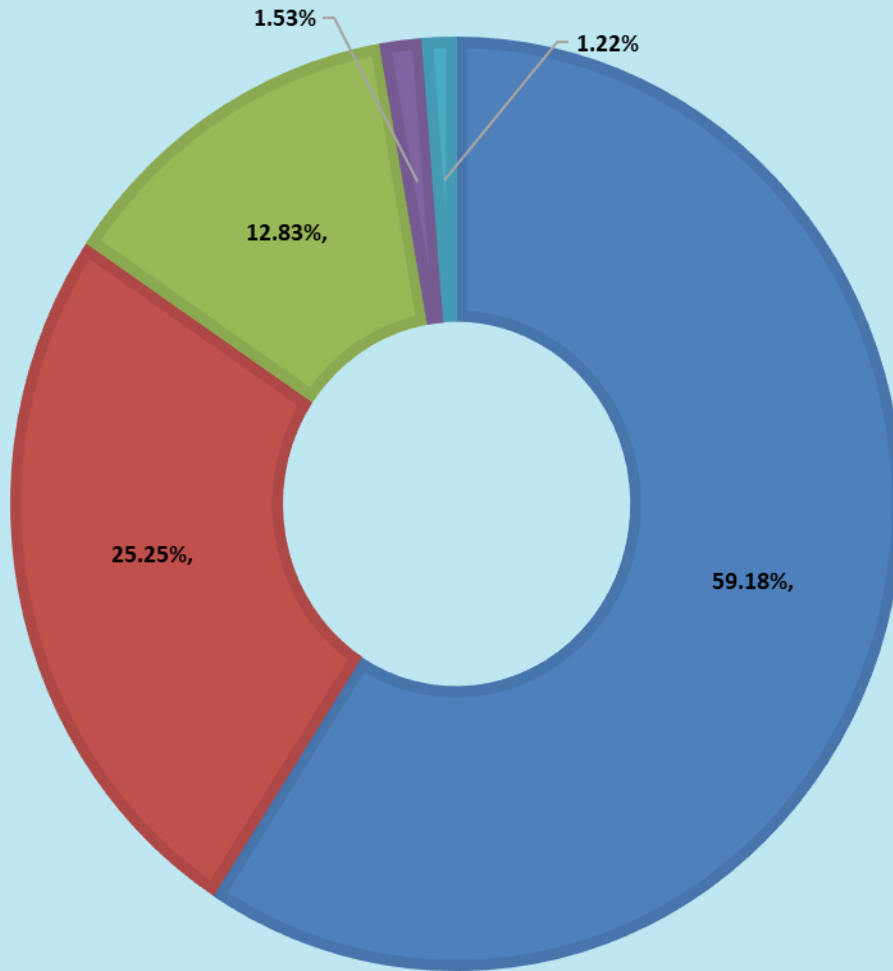
Consolidated GRC Financial Statements -- (Unaudited)

Consolidated Statement of Activities for the Period
01 July 2000 to 31 Dec 2022

Operating Expenses	
Salaries and External Remuneration	\$37,046,498
Conferences, Training and Workshops	\$21,155,126
Grants & Donations	\$16,984,864
Rent	\$4,348,156
Depreciation	\$1,703,223
Documentaries, Publishing & Printing	\$1,931,682
Travel	\$1,532,132
Subscriptions	\$1,306,434
Communications	\$1,293,151
General and Administrative	\$1,582,662
Professional Fees	\$1,612,229
Sales & Marketing	\$535,893
Finance Charges	\$254,301
Total Operating Expenses	\$91,286,352



SOURCES OF INCOME IN PERCENTAGE



■ Contributions by Dr. Abdulaziz Othman Sager, GRC Chairman

■ Projects and Consultancies

■ Conferences, Training and Workshops

■ Online Subscriptions & Publications

■ Other

Consolidated GRC Financial Statements -- (Unaudited)

Consolidated Statements of Financial Position

01 July 2000 to 31 Dec 2022

Particulars	Total
	All amounts in USD
Assets:	
Long-term assets	
Property and equipment net	\$25,996
Total long-term assets	\$25,996
Current assets	
Trade and other receivables	\$230,140
Prepayments / advances	\$22,356
Deposits	\$16,461
Cash in hand and at bank	\$853,632
Total current assets	\$1,122,588
Total assets	\$1,148,585
Liabilities:	
Current liabilities	
Trade and other payables	\$311,589
Accrued expenses	\$84,116
Total current liabilities	\$395,705
Net Assets	\$752,879
Net Equities/Reserves and Surplus	\$752,879
Total Laibilities & Equities	\$1,148,585

NOTE:

This is a consolidated financial statement for the following GRC entities:

Gulf Research Center Foundation ----- Gulf Research Centre Cambridge

Gulf Research Center – Jeddah ----- Gulf Research Center – Dubai

This statement is a compilation of the financial activities of the individual GRC entities.

The primary source of GRC funding is Dr. Abdulaziz Sager, GRC Founder and Chairman

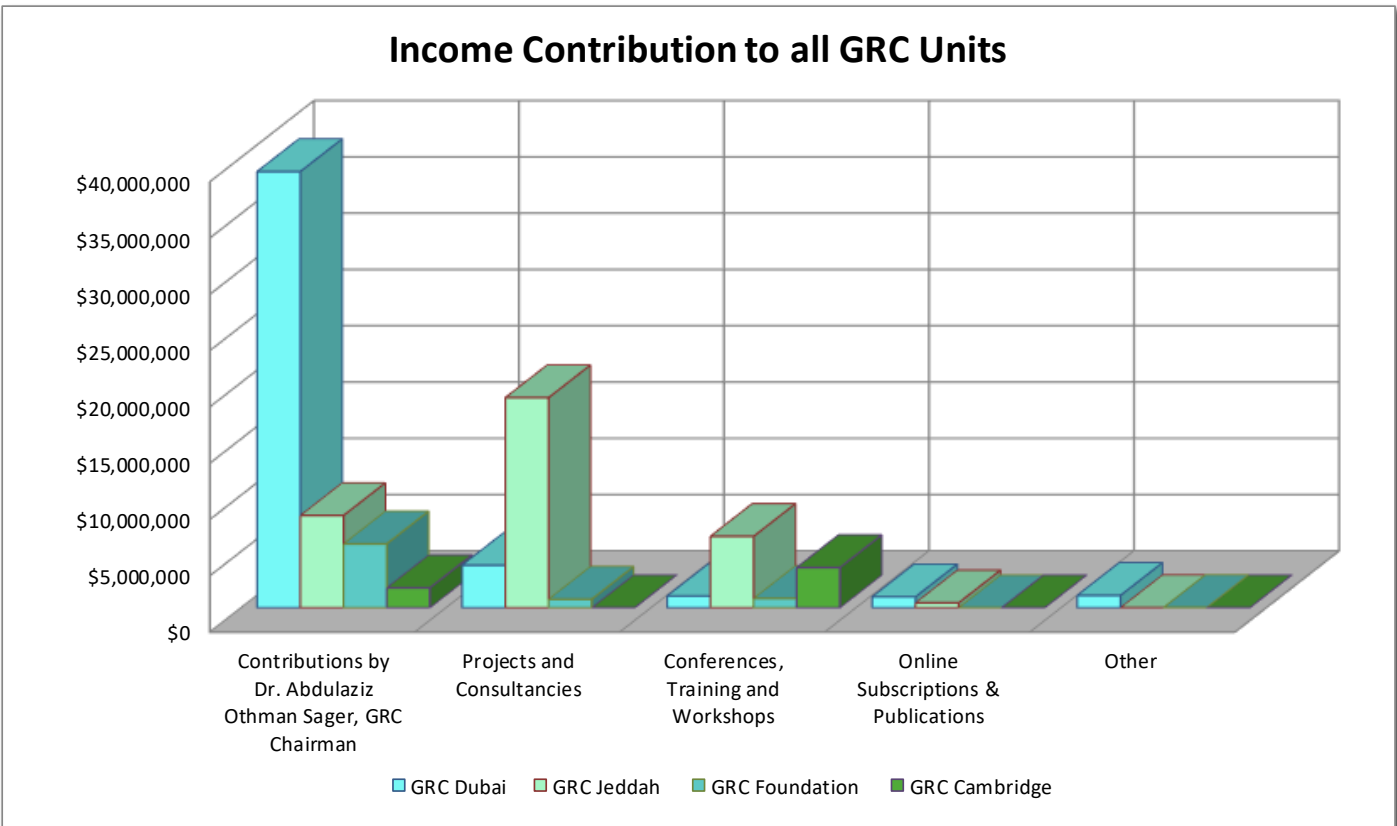
Consolidated Financial Statement of Gulf Research Center (Entity-based)

GRC Dubai (2000-2010) – GRC Jeddah
GRC Cambridge – GRCF Geneva

Consolidated GRC Financial Statements -- (Unaudited)

Consolidated Statement of Activities for
 Period - 01 Jan 2000 to 31 Dec 2022

Revenues	GRC Dubai	GRC Jeddah	GRC Foundation	GRC Cambridge	Total
Contributions by Dr. Abdulaziz Othman Sager, GRC Chairman	\$38,743,174	\$8,195,187	\$5,674,267	\$1,772,061	\$54,384,689
Projects and Consultancies	\$3,782,728	\$18,659,721	\$760,070	-	\$23,202,519
Conferences, Training and Workshops	\$1,046,116	\$6,341,396	\$831,268	\$3,570,652	\$11,789,432
Online Subscriptions & Publications	\$971,040	\$434,995	-	-	\$1,406,035
Other	\$1,094,835	\$7,319	\$17,117	\$1,460	\$1,120,731
Total Revenue	\$45,637,893	\$33,638,618	\$7,282,722	\$5,344,172	\$91,903,406



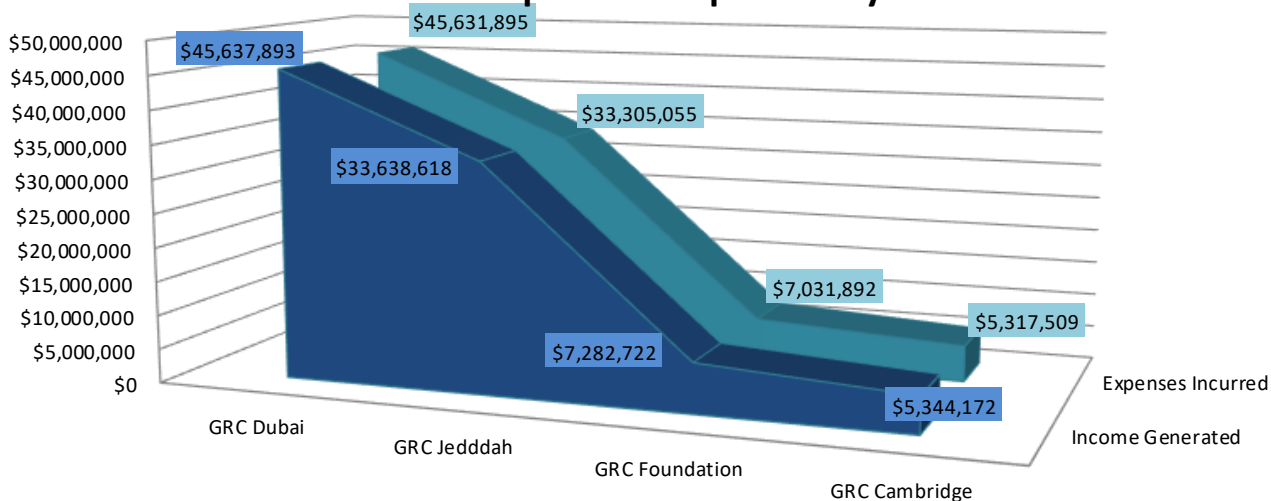
Consolidated GRC Financial Statements -- Unaudited

Consolidated Statement of Activities for

Period - 01 Jan 2000 to 31 Dec 2022

Description	GRC Dubai	GRC Jeddah	GRC Foundation	GRC Cambridge	Total
Operating Expenses					
Salaries and External Remuneration	\$25,113,165	\$7,385,627	\$4,126,016	\$421,689	\$37,046,498
Conferences, Training and Workshops	\$5,953,745	\$10,043,070	\$426,517	4,731,794.28	\$21,155,126
Grants & Donations	\$2,899,944	\$13,803,716	\$281,205	-	\$16,984,864
Rent	\$3,234,071	\$112,000	\$1,002,086	-	\$4,348,156
Depreciation	\$1,606,628	\$15,514	\$81,081	-	\$1,703,223
Documentaries, Publishing & Printing	\$1,477,004	\$454,678	-	-	\$1,931,682
Travel	\$949,632	59,120.00	\$523,381	-	\$1,532,132
Subscriptions	\$1,306,434	-	-	-	\$1,306,434
Communications	\$1,062,173	52,073.33	\$178,904	-	\$1,293,151
General and Administrative	\$698,399	\$691,690	\$169,986	22,587.11	\$1,582,662
Professional Fees	\$625,852	\$687,566	\$167,010	\$131,801	\$1,612,229
Sales & Marketing	\$526,255	-	-	9,637.90	\$535,893
Finance Charges	\$178,593	-	\$75,708	-	\$254,301
Total Operating Expenses	\$45,631,895	\$33,305,055	\$7,031,892	\$5,317,509	\$91,286,352

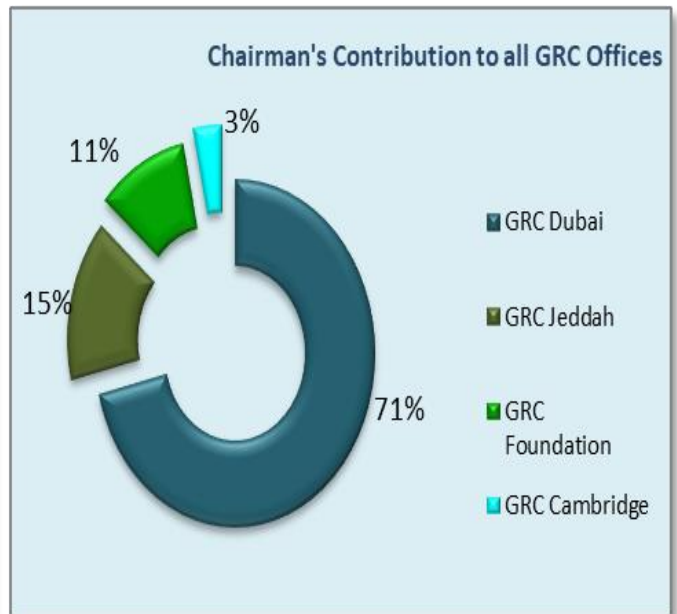
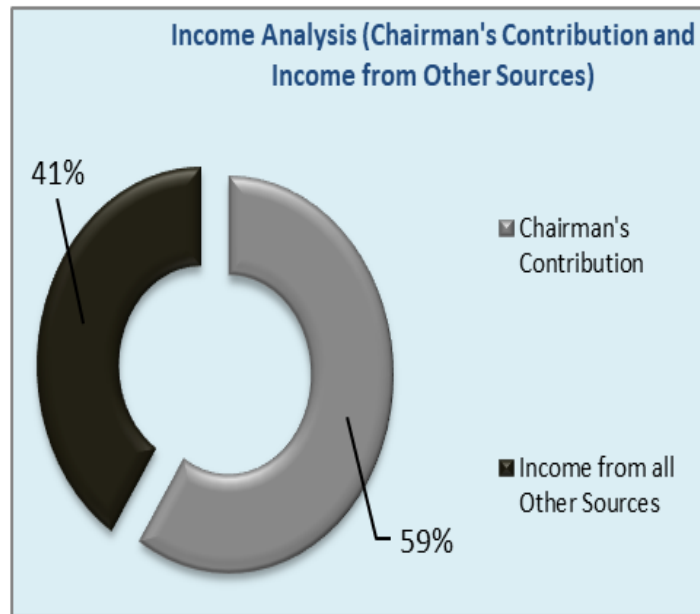
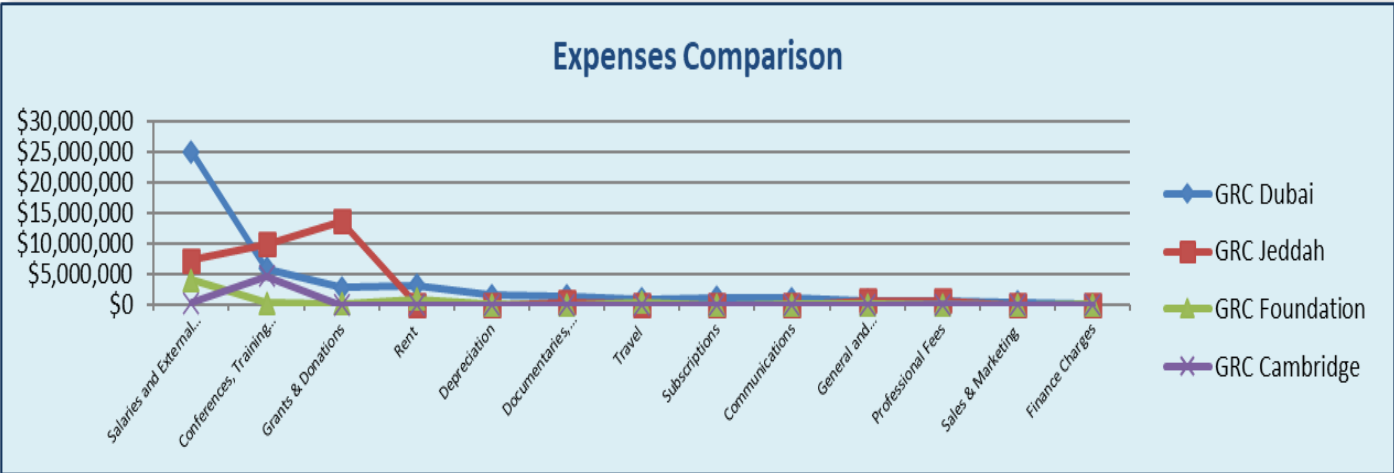
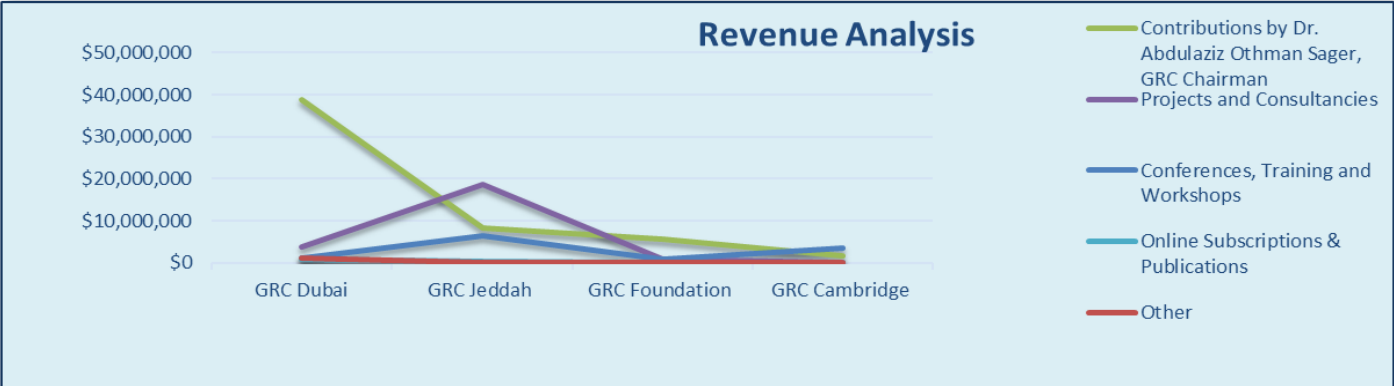
Income and Expense Comparison by GRC Unit



	GRC Dubai	GRC Jeddah	GRC Foundation	GRC Cambridge
Income Generated	\$45,637,893	\$33,638,618	\$7,282,722	\$5,344,172
Expenses Incurred	\$45,631,895	\$33,305,055	\$7,031,892	\$5,317,509

Revenue and Expense Analysis for all GRC Units (2000 – 2022)

Summary of total revenues and expenses for all GRC units in Dubai, UAE (GRC), Jeddah, Saudi Arabia (GRC), Geneva, Switzerland (GRC Foundation), and Cambridge, UK (GRC Cambridge) during the period 2000 to 2022:





Gulf Research Center
K n o w l e d g e f o r A l l